

**buildOn**

**IGNITE CHANGE. INVEST IN HOPE!**



# OUR ULTIMATE IMPACT

buildOn is a movement. We've been uniting communities through service and education to ignite a more equitable future since 1991.

We mobilize people in low-income countries to build schools. Our American youth transform their own neighborhoods through service and change the world by helping build these schools.

As of Fall 2024, buildOn U.S. students have contributed over **2.5 MILLION COMMUNITY SERVICE HOURS**, while buildOn Global has completed more than **2,700 SCHOOLS** and breaks ground on a new school every two days.

## WE BUILD COMMUNITY



*Solidarity is our blueprint.*  
buildOn mobilizes people to embrace civic responsibility and elevate their communities.

## WE CREATE OPPORTUNITY



*Equity is our foundation.*  
buildOn connects people from all walks of life to opportunities for social and economic advancement.

## WE INSPIRE AGENCY



*Hope is our keystone.*  
buildOn equips people with the skills and life experiences to realize their fullest potential.

**“buildOn creates strong leaders for our communities—students who are unafraid to take charge, willing to work, and ready to fight for change. Students like me! To see change, you have to be the change.”**

*—Laciann, buildOn Bronx student*



# BUILDON U.S.

In the U.S. we mobilize high school students from marginalized communities across six cities to transform their communities and themselves through service.



**2.5 MILLION**

HOURS OF SERVICE CONTRIBUTED BY BUILDON STUDENTS

**200,000**

STUDENTS ENGAGED SINCE 1991

**+15 DAYS**

OF SCHOOL ATTENDED PER YEAR BY BUILDON STUDENTS COMPARED TO THEIR PEERS

**98%**

OF BUILDON STUDENTS GRADUATE HIGH SCHOOL

**2,656**

SCHOOLS BUILT

**4,874,105**

VOLUNTEER WORKDAYS CONTRIBUTED BY COMMUNITY MEMBERS

**347,780**

STUDENTS ATTENDING BUILDON SCHOOLS EVERY DAY

**49%**

OF STUDENTS ARE FEMALE

# BUILDON GLOBAL

Globally, we partner with communities in eight of the world's economically poorest countries to construct schools, bring children back to the classroom, and support adult learners.



# WHY SERVICE AND EDUCATION?



**Service** is at the heart of everything we do. In our increasingly divided world, service brings us together, gives meaning to our lives, and transforms communities. Whether you're a buildOn supporter constructing a school on Trek or a buildOn U.S. student giving back to your community, your act of service goes beyond helping others—it **changes the way you see the world** and yourself in it.

We also know that **poverty and illiteracy** are inextricably linked. A person who can't read or write earns up to 42 percent less than those who can. And of course, professional growth opportunities are minimal **without a formal education**, continuing that **cycle of poverty and illiteracy** throughout generations.

But it's not just financial. Studies have shown that when a woman receives at least some formal education in her life, she is less likely to marry young, more likely to understand the nutritional needs of her children, and more likely to understand the importance and methods of disease prevention. In fact, **a child born to a mother who can read is 50 percent more likely to survive past the age of 5** than a child born to a mother who is illiterate.

**Poverty will only be reduced if access to education is increased. And the only way we can do that is by working together in solidarity.**

**“I want to say a big THANK YOU to buildOn for giving me the opportunity to go back to school and follow my dreams. Without the bread of education, I am nothing.”**

*—Sheelove, buildOn Global student, Haiti*



# AS SEEN ON



THE CHRONICLE  
OF PHILANTHROPY



Parade

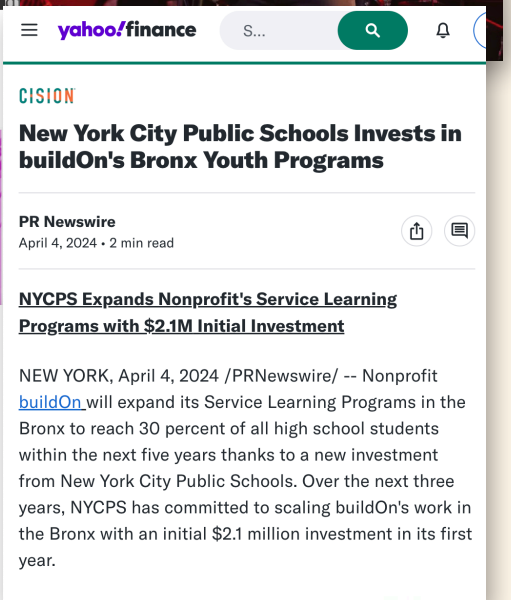
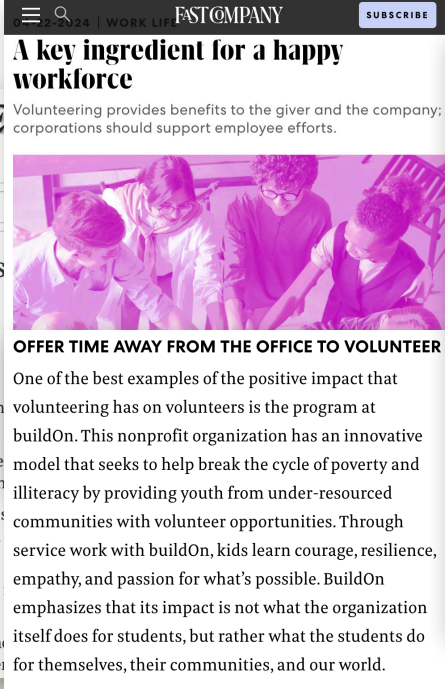
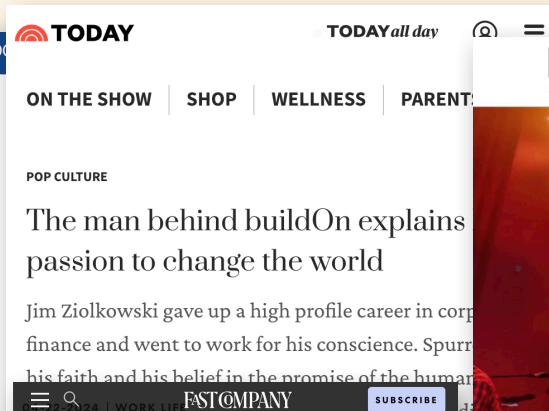
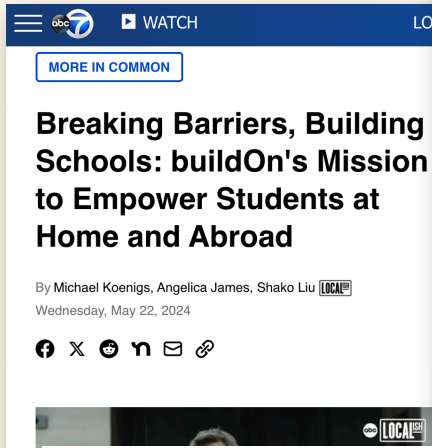
FAST COMPANY

stamford  
advocate



yahoo!  
finance

The  
Washington  
Post



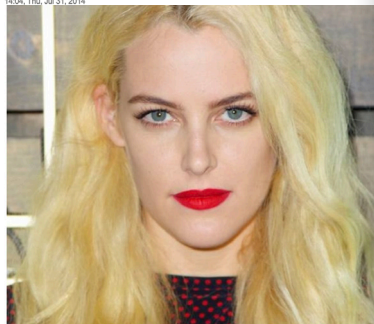
# OUR CELEBRITY PARTNERS

EXPRESS Discount codes Puzzles Horoscopes Express

## Elvis' granddaughter raising funds for school in Nepal

ELVIS PRESLEY's actress granddaughter RILEY KEOUGH has appealed fans to donate to her fundraising campaign to help her build a school in poverty-stricken Nepal.

14.04, Thu, Jul 31, 2014



The Magic Mike star has teamed up with officials at youth empowerment organisation buildOn to provide kids in one community in the South Asian country access to education.

FEELGOOD



Travis Van Winkle // Yves Bright

## You mentioned building the schools in Senegal, tell me more about that nonprofit you're involved in, BuildOn.

buildOn is an incredible organization that's been around for 30 years. They are a two-fold nonprofit. They inspire youth around the United States in an after-school program to be of service in their community. They paint murals they serve the homeless, they plant gardens. Then buildOn takes them across the world to developing countries and they build schools together and help change the lives of those that haven't had access to education.

There's also the international school building program, where you or I could get a group of friends together and raise some money to go build a school. I've been involved for over 10 years now, and I've been to Malawi three or fo

## Alanna Masterson Stays Weird

By Acyness Deyn  
Photographed by Brian Higbee

February 26, 2015



The fans of the show are next level—avid, live-and-die for it.

PERSON: I'll still be an actor when I leave the show and I'll go on to do other things, but it's cool 'cause they're actually really loyal. I just made a trip with an organization called buildOn to build a school in a remote village. The closest school was 100 miles or something, and I

all of my money on social media pretty much. Each fan, whether they donated a dollar, or 20

buildOn

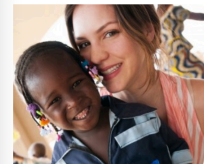
Home Get Involved Get Updates

Katharine McPhee Partners with buildOn...

## Katharine McPhee Partners with buildOn to Construct Schools in Burkina Faso

February 21, 2014

SHARE Twitter Facebook LinkedIn



Actress and humanitarian Katharine McPhee, and her husband Nick Cokas, have partnered with buildOn to expand our

school building program to Burkina Faso, West Africa.

US ENTERTAINMENT SUBSCRIBE

## Who Is Hallmark Channel's Erin Cahill? 5 Things to Know About the 'Christmas on Cherry Lane' Actress

By Johanni MacIsaac | December 8, 2023



### 4. Which Charities Does Erin Cahill Support?

Cahill is an avid humanitarian, having worked with The Kindness Campaign and BuildOn charities. "My husband and I have been working with BuildOn for years. What they do for education here in America and across the world is absolutely unparalleled in my book," she wrote via Instagram in November. "They are a piece of my heart."

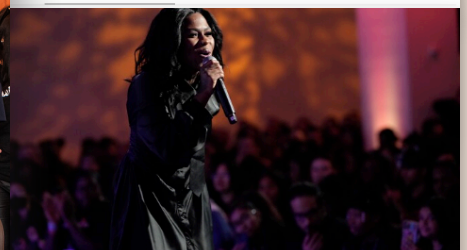
She is also a frequent supporter of Remembering Wildlife, which raises money to save endangered species through its photography book sales.



## NBCU President and General Manager and buildOn Board Member Kevin Cross hosts an immersive Career Day for Chicago students.

The Washington Post Sign in

Arts & Entertainments Power The Media Fashion Of Interest



Just Sam performs at the buildOn Gala in New York City in November. (Ilya S. Savenok/Getty Images for buildOn)

After the BuildOn Gala, Just Sam was sitting with full glam hair and makeup and surrounded by their team and beaming grandmother — the type of scene audiences might expect from a former "Idol." Just Sam was happy to be rebuilding their career and talked about how they were proud to be the first LGBTQ+ "Idol" winner. Even though that fact wasn't included in the show, they were never "hiding."



# “Service and education light a fire that can’t be extinguished.”

—Jim Ziolkowski, *buildOn* Founder & CEO



## OUR FOUNDER

Over 30 years ago, when Jim Ziolkowski was hiking through Nepal after college, he stumbled upon a small village celebrating the opening of a new school. He was so inspired by the community’s joy, excitement, and gratitude for education that he gave up his career in corporate finance and dedicated his life to breaking the cycle of poverty and illiteracy. We’ve been uniting people worldwide through service and education ever since.

Jim is the N.Y. Times bestselling author of *Walk in Their Shoes*, and has been featured on NBC’s TODAY Show, ABC, CNN, CBS Evening News, PBS, TED, The Wall Street Journal, and NPR. He has also been endorsed by three Nobel Peace Prize laureates including Mother Teresa, the 14th Dalai Lama, and former President Barack Obama. Jim received a Doctorate in Humane Letters, honoris causa from St. John’s University and he delivered the commencement speech for the 2024 graduating class.

# LEADERSHIP TEAM



**Marc Friedman**  
*Chief Development Officer*

Marc was first a passionate buildOn volunteer, then joined the board in 1992, and officially became a member of the staff in 1997. Since then, he has led buildOn's fundraising efforts, helping to build the organization into a leading global nonprofit with a four-star rating on Charity Navigator. Marc has served as president at Temple Sinai in Stamford, CT, an advisory council member for GoodCircle.org, and as a board member at the Volunteer Center for Southeastern Connecticut. He also sits on the Governance and LATAM (Latin American) committees at buildOn.



**Carrie Pena**  
*Chief Operating Officer*

Carrie has been leading with buildOn for over 18 years, driving strategic initiatives and partnerships, and fostering a culture of innovation and excellence within the organization. As COO she ensures success in buildOn's U.S. Service Learning Program, People Operations, Data and Impact, and Marketing departments in order to provide effective community service engagement for students in under-resourced high schools. Carrie is also a member of 100 Rochester Women Who Care, an organization of focused and compassionate professional women committed to effective change in our communities.



**Rosann Jager**  
*Chief Operating Officer, Global*

Rosann began her 25-year career in education and development as a Peace Corps volunteer in Namibia. In 2005 she joined buildOn as an Engagement Specialist, working directly with Detroit students on meaningful service projects in their communities. Today, she oversees buildOn's Global and Trek programs and is focused on raising funds for Detroit's Service Learning Program.



**Travis Welcome**  
*Chief Program Officer, U.S.*

For over 15 years, Travis has been committed to nonprofit leadership, education, and youth development. He designs programs that provide young people with opportunities to explore, engage, and reimagine their possibilities. As the U.S. Chief Program Officer at buildOn, Travis leads the organization's Service Learning Program across all U.S. regions. Additionally, he serves on the professionals board of the New York Foundling and The Felix.



**Djibril Ouattara**  
*Chief Program Officer, Global*

As Global Chief Program Officer, Djibril oversees buildOn's global programs to construct schools, bring out-of-school children back to the classroom, educate adult learners, and develop community income-generating initiatives. He has a background in sustainability, development, and macroeconomics.

We build community.  
We build schools.  
We build hope.  
We **buildOn.**



**For Media Inquiries:**

[press@buildon.org](mailto:press@buildon.org)

1111 Summer Street, Suite 602A

Stamford, CT 06905

